

ColdVision Flexible Bundles

for ColdVision light sources



As the name suggests, SCHOTT ColdVision Flexible Bundles are highly bendable and generally used to highlight structures through shadows. In contrast to gooseneck light guides, they offer a higher flexibility and need to be held.

Features:

- Variety of standard sizes with tight bending radius for easy routing.
- Available with 1, 2, or 4 branches.
- Available as randomized versions to improve spot uniformity.
- Focusing optics, filters and mechanical accessories available.

Advantages:

- High flexibility for different light requirements, as well as remote illumination.
- Randomized bundles with multiple outputs can be calibrated to deliver a matching output within ~5 % bundle-to-bundle.

Bundles

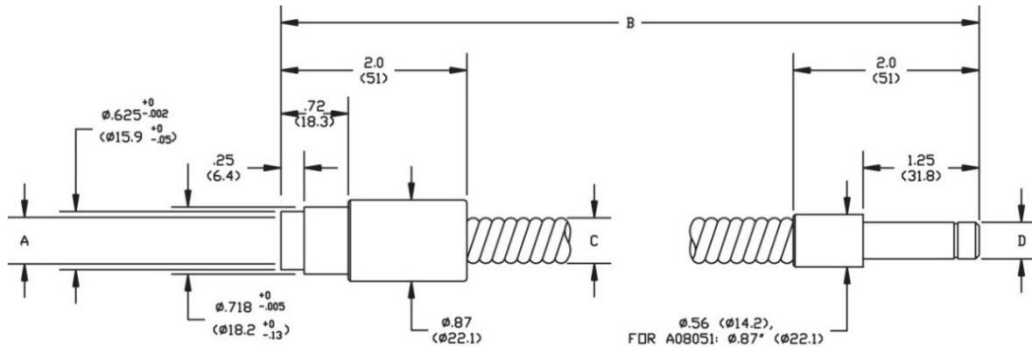
Description	Part No.	Active Input Fiber Diameter (A)	Bundle length (B)	Tubing Diameter (C)	Distal Ferrule Diameter (D)	Bend Radius
Single Bundle	A08020.40	.20" (5mm)	40" (1016mm)	.39" (10mm)	.393" (10mm)	.5" (13mm)
	A08020.60*		60" (1524mm)			
	A08025.40	.25" (6mm)	40" (1016mm)	.47" (12mm)		.6" (15mm)
	A08025.60*		60" (1524mm)			
	A08031.40	.30" (8mm)	40" (1016mm)	.75" (19mm)		1.4" (36mm)
	A08031.60*		60" (1524mm)			
	A08031.80*		80" (2032mm)			
	A08051.40	.51" (13mm)	40" (1016mm)	.69" (18mm)		1.0" (25mm)
	A08051.60*		60" (1524mm)			
		A21200*	.40" (10mm)	30" (762mm)		.507" (13mm)
Quad Bundle	A08545*	.50" (13mm)	40" (1016mm)	.47" (12mm)	.47" (12mm)	.393" (10mm)
Dual Bundle	A08530*	.30" (8mm)		.40" (10mm)	.21" (5.3mm)	.5" (13mm)
	A08540*	.36" (9mm)		.47" (12mm)	.25" (6.4mm)	.6" (15mm)
	A08550*	.43" (11mm)			.30" (7.6mm)	
	A08550.72*		72" (1829mm)			
Single Bundle Randomized	A08031.40R*	.30" (8mm)	40" (1016mm)	.47" (12mm)	.393" (10mm)	.6" (15mm)
	A08031.60R*		60" (1524mm)			
	A08031.80R*		80" (2032mm)			
Randomized & Calibrated Bundle	A21040*	.36" (9mm)	48" (1219mm)	.60" (15mm)	.393" (10mm)	1.0" (25mm)
	A21045*	.51" (13mm)		.83" (21mm)	.393" (10mm)	.6" (15mm)
	A21050*	.43" (11mm)		.67" (17mm)	.393" (10mm)	1.2" (30mm)

* Made-to-order products

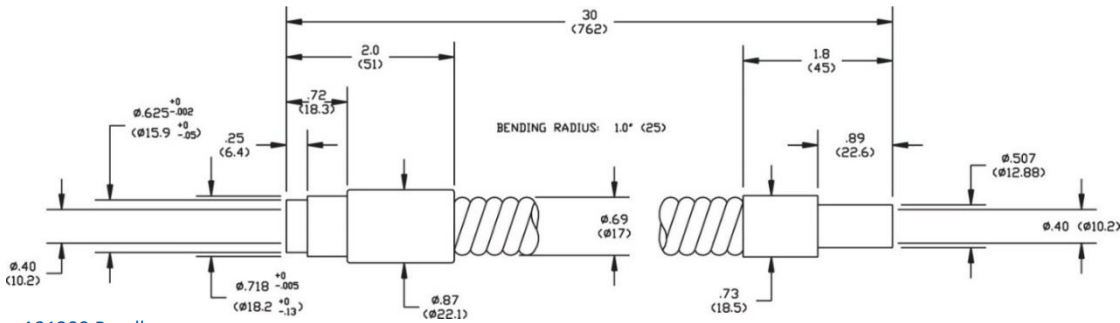
Custom configurations available. Compatible accessories available. See ColdVision-Accessories data sheet.



Single Bundle: Dimensions

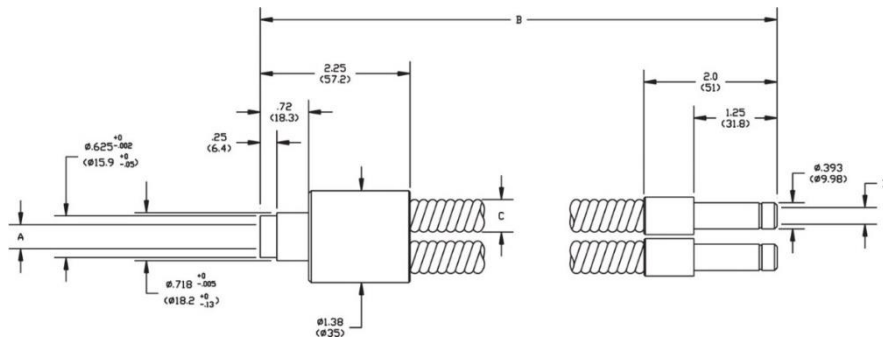


A08020.40 – A08051.60

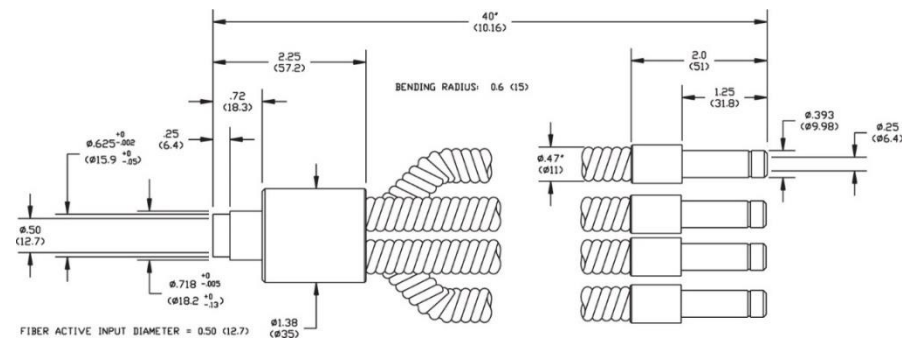


A21200 Bundle

Quad and Dual Bundle: Dimensions



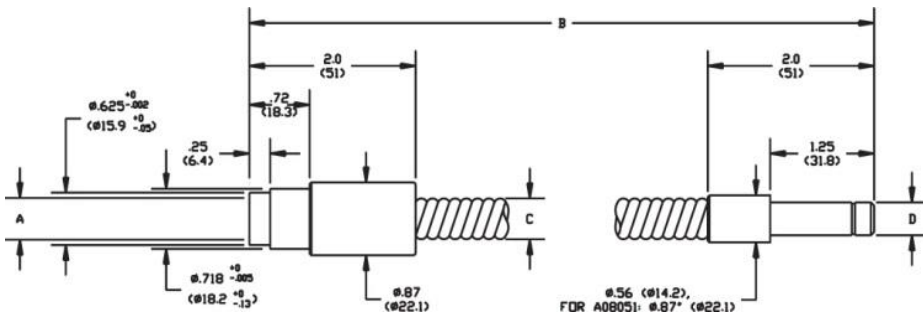
Dual Bundle, A08530 – A08550.72



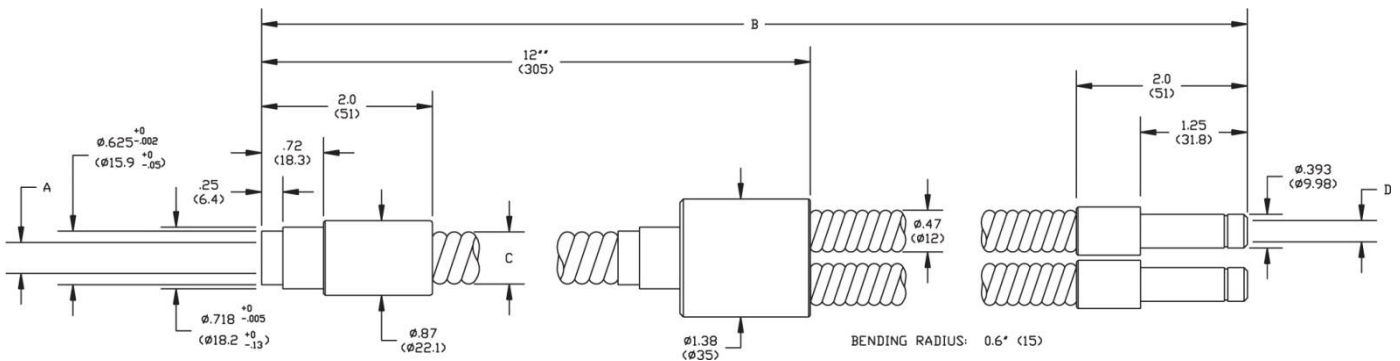
Quad Bundle, A08545

Warning : This product is manufactured with glass fiber. Not for use in cable/hose carrier. Call SCHOTT to discuss moving cable/hose carrier applications.

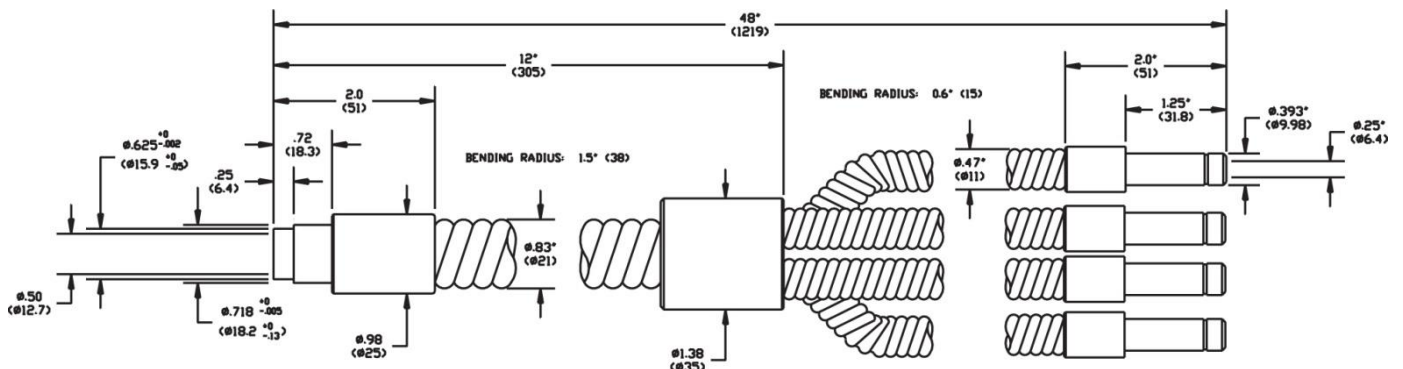




Single Randomized Bundle, A08031.40R - A A08031.80R



Dual Randomized & Calibrated Bundle, A21040 - A21050



Quad Randomized & Calibrated Bundle, A21045

Warning : This product is manufactured with glass fiber. Not for use in cable/hose carrier. Call SCHOTT to discuss moving cable/hose carrier applications.

All specifications are subject to change without prior notice. This datasheet or any extracts thereof may only be used in other publications with express permission of SCHOTT. © SCHOTT North America, Inc.

Lighting and Imaging
SCHOTT North America, Inc.
 122 Charlton Street
 Southbridge, MA 01550
 USA
 Phone: +1 (508) 765-9744
 Fax: +1 (508) 765-1299
 info.microscopy@us.schott.com
 www.schott.com/coldvision

